

## Community Newsletter January & February 2024

### Station safety performance and operations

We measure our safety performance against top tier indicators, including nuclear reportable events, environmental events, and staff and contract partner recordable injuries.

During the period of the report there have been:

- 1 recordable injury
- No nuclear reportable incidents
- No environmental incidents

Sizewell B has operated at around full capacity during this period providing low carbon electricity to over 2 million homes.

Please click on the link below for a daily update of the status of our nuclear power stations. The link will show which nuclear reactors are in service and what they were generating at the time the information was updated. You can also see which reactors are out of service, what the reasons are and when we expect them to return to service. In addition, we have included the expected timing of the next statutory outage of each nuclear reactor. <http://www.edfenergy.com/energy/power-station/daily-statuses>

### Lost Time Injury

An operator was carrying out a routine test of a fire system valve which involved using a flexible hose to drain water from the pipework into a local drain in the room. During the test there was an unexpected discharge of air and clean water from the drain hose causing the free end to 'whip' out of the drain. The operator in attendance was holding the hose and naturally reacted to move out of the way. There was no physical impact between them and the end of the hose or nearby plant.

Following the incident the Operator developed a headache and the next day contacted the NHS who advised attending A&E as a precaution. The hospital diagnosed the operator with minor concussion due to their rapid reaction when the event occurred. They were advised to remain off work for a period and the event has been classified as a Lost Time Injury (LTI).

As a result of this event we have reviewed and re-written the procedure to prevent recurrence. One of the changes is to ensure the hose is fully restrained, rather than being held by the operator.

### Staffing at Sizewell B

We currently have **601** EDF staff this includes **13** Visitor Centre staff, **17** Apprentices, **3** Industrial placements, **3** Technical Trainees and 250 year round contracting partner's.



## Sizewell B refuelling outage

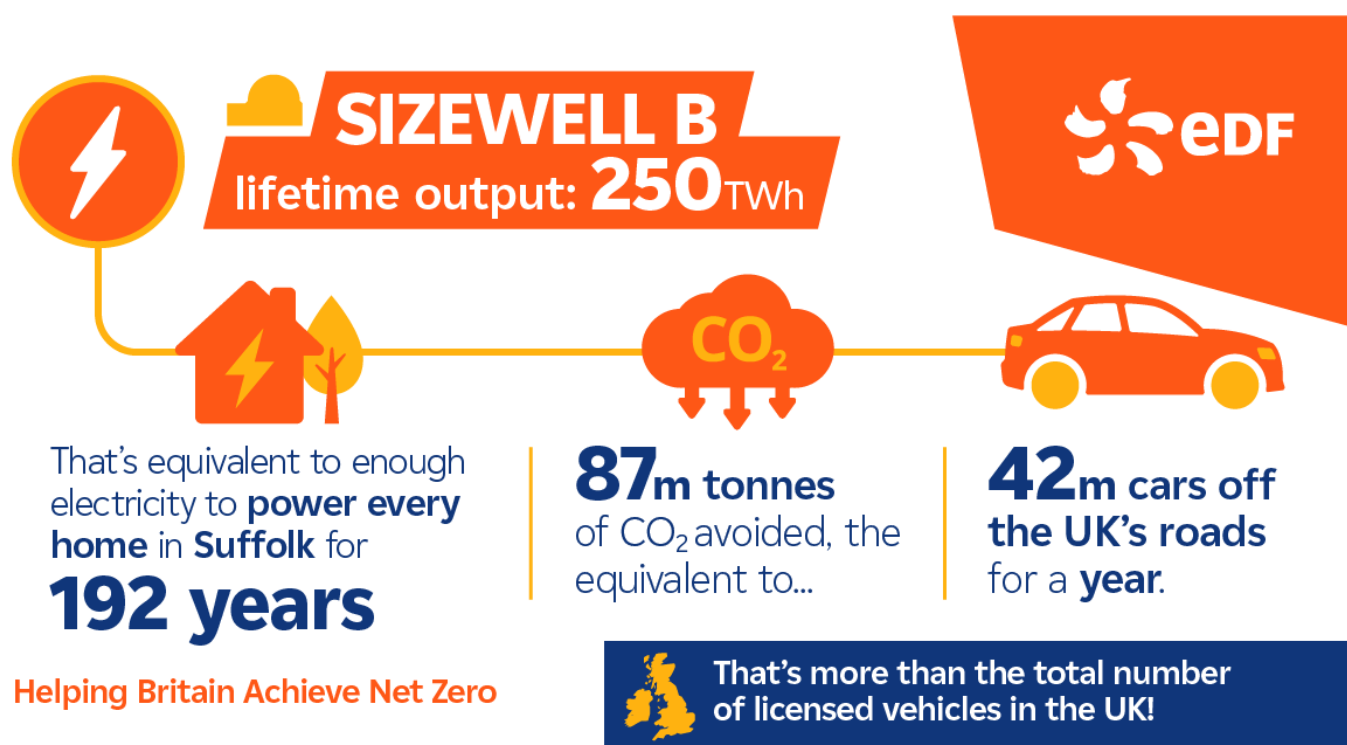
Sizewell B will be brought offline on **06 October 2024** to begin its nineteenth refuelling and maintenance outage, as planned - expected to last 60 days.

## Sizewell B and the Community

### Sizewell B hits low-carbon electricity milestone

In early January, Sizewell B hit a significant milestone, passing 250TWh of electricity generation since the station first became operational in 1995 - that's enough electricity to power every home in Suffolk for 192 years.

By reaching the low-carbon electricity milestone, it's estimated the power station has saved 87million tonnes of carbon dioxide from entering the atmosphere - the equivalent of keeping all cars in the UK off the road for over a year.



The power station is a key employer in the eastern region, bringing around £40million each year into the local economy through wages alone. Over 600 people are directly employed at the site on the Suffolk coast with a further 250 in year-round contracting roles.

EDF has said that it is fully committed to progressing the work required to extend Sizewell B's operational lifetime by another 20 years, out to 2055. As well as finalising the technical case, the company is seeking greater cost certainty and confidence in the long-term commercial case to enable a final investment



decision. To support this programme of work we will be increasing our headcount by 10% and work is progressing well with preparations and planning to date.

### **Sizewell Visitor Centre passes the 100,000 visitor's milestone as Sizewell B turns 29 years old**

Following its most successful year since it opened just over a decade ago, the Sizewell Visitor Centre has now passed a major milestone – with over 100,000 visitors coming to the Centre for educational workshops and tours of the Sizewell B nuclear power station.



The Visitor Centre's milestone comes on the same day that Sizewell B marks 29 years since the station began generating for the UK grid.

The station first started generating low-carbon electricity on 14 February 1995.

The Sizewell Visitor Centre is open to the public for free tours, education workshops and activities, as well as career events. Tours allow visitors to see the very heart of Sizewell B nuclear power station – its turbine hall, which houses the station's two main turbine generators.

A key element of the Visitor Centre is its relationship with schools. The Centre has an interactive exhibition to help students and visitors learn about nuclear power generation, alongside a classroom facility. Schools come from all over the UK and internationally, but the majority are regular visitors from schools and colleges in the region, some of which have embedded visits to Sizewell B into their curriculum.

Workshops and outreach sessions are targeted at different age groups, with sessions that focus on science and engineering to apprenticeship opportunities, and the team make visits to key events in the area, from the Suffolk Show to the Norwich Science Festival. For under 11s, there are also science workshops, including fun STEM activities like friction and jelly experiments, circuits, and ACDC congas.

The Sizewell Visitor Centre is open to the public from 9am to 4.30pm Monday – Friday. To arrange a tour of the power station, you can email [Sizewellbtours@edf-energy.com](mailto:Sizewellbtours@edf-energy.com).

### **Open day to showcase growing apprenticeship opportunities at Sizewell power stations**

Earlier in February, an open day at Sizewell Visitor Centre took place showcasing some of the growing apprenticeship opportunities at Sizewell power stations, covering a range of careers in the nuclear sector, from engineering to chemistry, project management and human resources.





Current Sizewell apprentices were on hand to talk about their experiences, as well as representatives from each of the power stations offering an insight into the apprenticeship opportunities coming up at Sizewell A, B, and C - meaning there will be apprenticeship opportunities at every stage of the nuclear timeline, from new site to existing site and decommissioning.

Sizewell B apprentice Jack Hovell joined Sizewell B in September 2021 after being made redundant from another apprenticeship in Ipswich during the pandemic. He now specialises in electromechanical work and has been continuing his education at Colchester Institute.



Jack, who was awarded the Sizewell B Apprentice of the Year Award in 2023, said: "It's been a fantastic experience. I was really able to learn from experienced personnel on site that have completed the apprenticeship themselves: people who know what it is like to first begin working at a nuclear power station like Sizewell B and could show me how to develop my skills successfully. And now I have the choice of either staying on the tools or moving into a more office or management type job role as I have seen many others in the department do."

## Company News

### Green light for construction phase as Sizewell C triggers Development Consent Order

On Monday 15 January 2024, SZC took another big step towards the path to construction with the triggering of the Development Consent Order (DCO).

This is a significant moment for the nuclear industry and for Britain, we were joined on site by Andrew Bowie MP, Minister for Nuclear and Renewables, to mark the occasion. Reaching this point demonstrates government's commitment to our project and it's clear SZC will play an important role in achieving 24GW of nuclear energy by 2050, as outlined in the government's nuclear roadmap released last week.



Triggering the DCO means a £250m package of funding for Suffolk communities will now become available throughout the construction phase of the project. This will boost employment and skills, enhance the local environment, drive social value and kick-start community projects such as our community arts programme which we launched late last year.



## Alzheimer's Society - new EDF charity partner

EDF has commenced the start of a three-year partnership with Alzheimer's Society, where employees across the company hope to raise £100,000 per year, with an additional donation from EDF of £50,000 each year. Employees voted for a charity dedicated to funding ground-breaking research and support services for those affected by dementia.



By working together, we can help give vital support to those who need it most and fund ground-breaking research to transform the future for everyone living with dementia.

## Next local community meeting

The next Sizewell A and B Site Stakeholder Group meeting will take place on **Wednesday 22 May 2024**, venue tbc. For further information please follow the link on the [Magnox website](#).

## Contacts

Niki Rousseau, Community Relations  
External Tel: 01728 653258

E-mail: [niki.rousseau@edf-energy.com](mailto:niki.rousseau@edf-energy.com)

Marjorie Barnes, Sizewell Head of Regional  
Affairs & Development

Tel: 01728 653378

Email: [marjorie.barnes@sizewellc.com](mailto:marjorie.barnes@sizewellc.com)

If you would like to receive this newsletter via e-mail please contact Niki at the above address.

