



ALDEBURGH TOWN COUNCIL

MOOT HALL, MARKET CROSS PLACE
ALDEBURGH, SUFFOLK, IP15 5DS

Tel: 01728 452158 Email: townclerk@aldeburghtowncouncil.co.uk

To members of the Town Council

Cllr Bond
Cllr Fellowes
Cllr Fox

Cllr Haworth
Cllr Haworth-Culf
Cllr Howard-
Dobson

Cllr Jones
Cllr Lumpkin
Cllr Langley

Cllr Webster

You are hereby summoned to **attend the Meeting of the Town Council** to be held at the **Moot Hall on Monday 8th January at 7pm.**

Kim Puttock
Town Clerk
3 January 2024

THE PUBLIC AND PRESS ARE WELCOME TO ATTEND

AGENDA

52. Apologies

53. Declarations of interest

To receive any declarations of interest and to consider requests for dispensations from Members on matters in which they have a disclosable pecuniary interest, other registerable or non-registerable interest.

54. Suffolk County Council (SCC) Councillors Report and Correspondence

55. East Suffolk Council (ESC) Councillors Report and Correspondence

56. Public Forum (15 minutes)

For the public to ask questions of the Council or raise issues for consideration at a future meeting of the Council.

57. To approve the draft minutes of the meeting of the Town Council held on 11th December 2023

58. Property and Finance Committee:

58.1. Report from the Chair of the Property and Finance Committee.

58.2. To approve the Income list for December 2023 and the Payments list for January 2024.

59. Services Committee

59.1. Report from the Chair of the Services Committee.

60. Planning Committee

60.1. Report from the Chair of the Planning Committee.

60.2. **RESOLUTION to APPROVE** Aldeburgh Town Council statement re 'Draft Healthy Environments' and 'Draft Rural Development Supplementary Planning' documents

61. Grants and Requests Committee

61.1. **RESOLUTION to APPROVE** a grant of £500 to the Fairfield Centre towards the cost of transport in 2024.

62. Reports from Members appointed to Outside Bodies

Members appointed to represent the Town Council on outside bodies to provide an update for their respective areas of responsibility.

63. Mayor's Report

64. Closure.

SCC Councillor Report – January 2024

I hope you all had an enjoyable festive period and wish you all the best for 2024.

As previous years, energy projects of all shapes, sizes, routes and forms will dominate the area. Thank you again to all those that responded to the last consultation either as groups or also individually. Some are already aware; The Suffolk Association of Local Councils (SALC) and Suffolk County Council (SCC) will be launching a newsletter on NSIPs. The newsletter will be written by SCC every time a Cabinet Member Report is published and distributed to all Suffolk parishes shortly after by SALC. The aim of the newsletter is to provide factual updates on projects to help ease some of the time burden NSIPs place on town and parish councils and I attach the 1st version is attached (to the email) if not already distributed. I will endeavour to also email this out but please do look out for the emails from Salc.

We have experienced yet more stormy weather and rainfall, The fields remain waterlogged, landowners are being contacted, please do advise where possible. I did post reminders of useful contacts etc out but please do add to websites/newsletters etc.

Best wishes

TJ

Budget

As mentioned in previous reports - it should not come as a surprise to anyone that public finances are under pressure at the moment - especially with the impacts of Russia's illegal invasion of Ukraine and post-COVID financial recovery and the related inflation being felt across the western world.

This impact is being felt in homes here in Suffolk. Whether that is in the bills we pay and goods we buy – everyone is feeling the pinch. Suffolk County Council is no different. We have a set budget for delivering public services but increasing costs, coupled with rising demand, means we have to make difficult decisions in order to balance the books.

As per last month's examples, protecting vulnerable children is currently costing Suffolk County Council £8.8 million more than we have available, home to school transport is costing £11.4 million more and adult care £3.5 million more.

Let us be clear, this is not mismanagement. We set budgets based on existing and forecast demand and, rightly, have a legal obligation to provide those services for people who qualify. This issue we (and many other councils) are facing is one of extraordinary levels of need that show no signs of abating. We are a well-run council.

Most people will not know that we have saved £66 million in the past five years by working smarter and leaner. But, faced with the most challenging budget-setting situation for many years with significantly more demand than we have the money for, we must make difficult decisions.

So, later today, (03.01.24) we will be publishing our budget plans for the next two years. I wanted to take the opportunity to let you know this is happening because openness and transparency are a core part of a council's role in public life.

Colleagues have spent months scrutinising all the council's spending – looking for ever more ways to save money by doing things differently or, in some cases, stopping doing them. We recognise that there is competition for every pound across all our services and understand that each service means something to someone.

Once again, we are putting adult and children's care at the heart of our plans because it is the right thing to do. However, to ensure appropriate levels of funding for these key services, and those most in need in Suffolk, we must make judgements about all the services we deliver and how we deliver them. Across the country, councils are having to make similar tough choices.

In the next two years, Suffolk County Council needs to pump millions of pounds extra into protecting the county's most vulnerable residents. Alongside this, we need to make millions of pounds worth of savings and look at council tax.

Full details of Suffolk County Council's financial plans for 2024/25 will be presented to our Scrutiny Committee in January and a final decision will be taken by all councillors in February.

In the meantime, we will continue to lobby the Government for more funds. We have joined national calls for additional support and lobbied the Chancellor of the Exchequer direct. We understand the financial pressure facing the Government with public services everywhere asking for more money. This is money that simply is not available at the moment, especially after the vital financial support made available during and following the pandemic. This means it is up to local authorities like us to find savings.

I appreciate that this feels a bit stark, but it is an honest account of the challenges we, and all county councils, are facing. It is our job to find the solution and to that I say that our commitment to make the best possible use of every pound of public money made available to us remains absolute.

Cllr R Rout.

Reminder - More than 1,700 people have already had their say in Suffolk County Council's consultation to Shape the Future of library services in Suffolk.

Residents still have time to have their say by visiting www.suffolk.gov.uk/LibraryConsultation before **Friday 26 January 2024**.

Easy-read and translated versions are available at the above website.

Alternative formats of the consultation are available on request, please email: Libraries.consultation@suffolk.gov.uk

Those who cannot access the consultation online can request a printed copy or assistance with completing the survey by calling 0345 603 1842.

I will be sitting on the main development site forum and Cllr R Smith and I will be sitting on the SZ C forum, Cllr Nicholls will sit with a cabinet member on the Northern Transport forum with HW officers. You may have picked up from the newsletter published by SZC Co that they have secured to independent chairs for these Fora – Brian Stewart (who used to be chair the Sizewell C Community Forum pre-examination) and Christine Abraham (who you may know as the previous CEX of Community Action Suffolk). Dates to note are:

SZC Forum – 2 April (please may I have any questions in writing by the 22nd March to submit before the deadline.)

Main Development Site Forum – 16/1 (please may I have any questions in writing by the 10th to submit before the deadline.)

Northern Transport Forum – 6/2 (I can submit written questions, please email by 2/1/24)

Southern Transport Forum – 12/2 (I can submit written questions, please email by 05/02/24)

£150,000 Home Office funding announced to support Serious Violence work in Suffolk

Suffolk's Safer Stronger Communities Board has announced a fund of £150,000, which will support work to tackle serious violence in Suffolk.

The £150,000 funding from the Home Office will support Suffolk's Serious Violence Strategy. Organisations can bid for funding for specific projects, which support the work of Suffolk's Serious Violence Strategy. Allocation of funding will be managed through Suffolk Community Foundation.

In January 2023, the Government introduced a Serious Violence Duty on public bodies to ensure relevant services work together to share knowledge and target interventions to prevent serious violence.

The Serious Violence Duty has given partners in Suffolk the opportunity to reflect on the current countywide system for tackling violent crime and in response to this, Suffolk's Safer Stronger Communities Board has published its Serious Violence Strategy.

The strategy brings together work already taking place across the system to tackle serious violence, such as the existing Criminal Exploitation, Violence Against Women and Girls and Combatting Drugs strategies.

By bringing this work together in one place, the Serious Violence Strategy aims to improve partnership working, using a whole system approach to tackle serious violence in Suffolk, focusing on young people and communities at risk of becoming involved in serious violence, creating a safer place for communities to live and thrive.

The strategy encompasses four core themes:

1. **Prevention and early intervention:** Focus resources and commissioning of interventions that are preventative, improving outcomes for young people.
2. **Safety of young people:** Use evidence led approaches to identify communities of greatest need.
3. **Communication and engagement:** Work with communities to continue to develop innovative solutions and promote successes. Use engagement opportunities to support evaluation of initiatives and review strategy aims.
4. **Strengthening the System:** Continue to collaborate, innovate, and work in partnership to create a whole system approach to tackling serious violence.

Cllr Bobby Bennett, Chair of Suffolk's Safer Stronger Communities Board, said: "Serious violence is a complex and serious issue that is not unique to Suffolk. Whilst Suffolk remains a very safe place to live and visit, we are not complacent, and recognise the need for strong partnership to ensure this type of crime does not increase.

"Suffolk's Serious Violence Strategy brings together the work happening across the county, to tackle serious violence and its root causes.

“The fund will bolster the work of the strategy, supporting Voluntary Organisations with specific projects aimed at tackling serious violence.

“By taking a whole system approach and focusing on young people and communities at risk of becoming involved in serious violence, we create a safer place for communities to live and thrive.”

Suffolk’s Safer Stronger Communities Board includes representatives from Community Safety Partnerships, District and Borough Councils, Suffolk County Council, Police, Police & Crime Commissioner, Youth Justice Service, Probation Service, Integrated Care Boards, Safeguarding and Criminal Justice Board.

Suffolk’s Serious Violence Strategy can be viewed at <https://www.suffolk.gov.uk/community-and-safety/communities/community-safety/serious-violence-duty>

The Serious Violence Fund from the Home Office of £150,000 is available to CVFSE organisations, parish councils, educational settings and public bodies from April 2024 and applications are invited for grants between £4,000 and £15,000. Organisations can apply by visiting: <https://www.suffolkcf.org.uk/grants/seriousviolencedutyfund/>

SZC Highways Update for Councillors: January 2024

See also <https://www.szcworkstracker.co.uk/track-a-project/>

Main Site (Leiston)

Commencement

We understand SZC Co are looking to commence the main site in the next week or so and that communications will be sent out by SZC Co shortly beforehand. I have asked that SCC Councillors are included.

Please use a sense of caution around this potential date and commencement.

Lovers Lane temporary access

This temporary access is now in use and the traffic management on Lovers Lane removed. For now, this will be the main access point into the main site.

Internal Haul Road

SZC Co have informed us that they intend to build a 2.8kmsurfaced haul road to allow access for early site establishment works. As this is off the public highway our specific concerns are the traffic movements generated on the public highway and the access off the public highway rather than the haul road itself. We understand that construction of the haul road (referred to as the Site Establishment Early Access Route – SEEAR). I understand that construction of this will start in the next few weeks (delayed from last week). Based on the information provided earlier the maximum daily movements forecast by SZC CO are 74 pre day increasing to 82 during surfacing works.

Bridleway 19

BR19 remains open with crossing point over the temporary haul road controlled by gates and banksmen.

Associated Construction Area (ACA) (Leiston)

King George Avenue:

SZC Co are finishing constructing a temporary access off King George Avenue to start construction of an office and welfare block by installing kerbs and a footway. **This will be the operation that triggers commencement of the DCO.** In terms of traffic the works will generate up to 34 HGV movements a day. These will include abnormal (wide) loads, delivery of which has already stated. **As above, please use caution around/regarding this.**

Benhall Fen Meadow Mitigation (Benhall):

A1094 Access (Benhall)

This is on hold until the spring due to the site being saturated.

A12/A1094 (Farnham)

The temporary measures installed due to safety concerns regarding HGVs turning in and out of the A1094 onto the A12 SZC Co have been mothballed until work restarts on the Benhall site

Halesworth Fen Meadow Site

We have received details for a temporary access to enable surveys and archaeology to be undertaken at this site. This will be followed by creation of a more substantial access for construction.

Levington:

Water Supply Facility / freight Management Facility

We understand that work in the layby will start in the next few weeks but do not have a program update for the FMF access.

- Felixstowe Road Layby: Anglian Water intending to install standpipes at the layby as a temporary measure for filling SZC water tankers soon, but we don't yet have confirmed dates. Part of the layby will be coned / fenced off but through access maintained.
- A temporary access will be installed just west of the end of the dual carriageway to allow access for archaeology and other surveys. This will be constructed as soon as we receive the details that enable us to agree the technical details. Construction will require temporary traffic signals for a short time.
- Freight Management Facility / Water Supply Facility: The planning application has been submitted to ESC and is awaiting determination. This includes forming a new access off Felixstowe Road. We have reviewed this and subject to some minor changes we consider it is acceptable to SCC as the highway authority in planning terms. SZC Co will still be required to seek technical approval from SCC for the access.

Deed of Obligation Schemes

AIL Route Scheme and AIL Structural Survey: Survey and reviews to check that AILs can navigate between ports (Ipswich / Lowestoft) and the SZC site. A review has been completed identifying further work at specific locations.

Structural Condition Surveys (Pavement Condition): Data collected. Awaiting interpretive report which will form baseline to monitor any deterioration.

B1122 Vibration Scheme: Scheme to reduce noise and vibration from road surface and manholes between Yoxford and Leiston. Extent, high level program and specification of work agreed. SZC Co now need to implement repairs within three months from commencement. Likely to see nighttime road closures on the B1122 from mid-February onwards.

Signage Strategy: The strategy for signage to the main site and the park and rides has been agreed. Those for the main site will be installed before Commencement. At first many will be temporary pending replacement of damaged or installation of additional sign posts.

Travel Plan - Cycle Spaces: SZC CO needed confirm the number of cycle spaces provided at the main site locations. Increase in these facilities is linked to growth of the workforce.

Traffic Management Monitoring System: SZC CO have supplied details of the system they will be using to monitor HGV movements.

Transport Incident Management Plan: SZC Co have provided contact details and process for contacting emergency services and vice versa in the event of an emergency on the highway network.

Planning Applications

- Water Supply Facility, Levington: With ESC. No further update at present
- Access to Aldhurst Farm Visitor Centre, Leiston, off B1122 Abbey Road. This was lodged with ESC just before Christmas. SCC yet to comment.

Other Activities

Highway Condition Surveys

These are mostly complete, but some core samples are still required on the B1122 between Yoxford and Leiston (to confirm the condition of the road).

Design and supporting activities.

SZC Co have started the detail design of most of the highway schemes (the associated development in DCO terms) and those in the Deed of Obligation. As part of this they are required to undertake road safety audits and you may see small teams of engineers doing these over the next few weeks. It is probable that other activities such as coring and trial pits will be necessary to inform the design of the highway projects. These would typically be done using temporary traffic

management noting that work on the A12 is not permitted during peak morning and afternoon periods.

We have been advised that SZC CO will be applying for a number of temporary accesses off the highway to undertake archaeological and other surveys for the Two Village Bypass and Sizewell Link Road in the next few months.

The design packages we have received so far are:

- AD6: Highway works north of Leiston: We have made initial comments to SZC CO and the design is being updated based on these comments. The only significant change since DCO is that the Bridleway Bridge over Leiston Drian is a more substantial structure as a result of having to carry utility apparatus for the project.
- AD3: A2/B1122 Roundabout at Yoxford: We are reviewing this at the moment. There are some changes to the drainage but these do not significantly alter the appearance of the scheme

Utility Works

SZC CO have advised us that there are public utility works that are needed to support the project and have requested that SCC are involved in programming these to co-ordinate with all highway works and minimise disruption.

Working Groups

Transport Review Group

The first full post commencement TRG meeting will be held at the end of this month. In time we will start receiving data from the monitoring and this will be published, along with agendas and minutes for the TRG on an ESC website.

Community Working Groups (Main Site, Northern Forum, Southern Forum) are being set up and these will have SCC Councillor representation. The SZC Co Transport Co-ordinator is meant to escalate any highway matters to the TRG and if necessary, SCC highway representatives invited to these groups.

Highway working groups are also recommencing with the first one in Leiston next Monday. Briefings.



Nationally Significant Infrastructure Projects (NSIPs) NEWSLETTER

Issue 1, December 2023

Introduction

What is an NSIP?

An NSIP is a Nationally Significant Infrastructure Project. They are a certain type of project, over a certain size, and considered by the Government to be so big and nationally important that permission to build them needs to be given at a national level, by the responsible Secretary of State. The thresholds for NSIPs are set out in sections 15 to 30A of the PA2008. Instead of applying to the local authority for planning permission, the developer must apply to PINS for a different kind of permission called a Development Consent Order (DCO). The PA2008 process was introduced to streamline the decision-making process for major infrastructure projects. Since then, over 110 NSIPs have been consented in the UK. PINS is responsible for undertaking Development Consent Order (DCO) examinations and writing a report with recommendations to the Secretary of State to aid their decision-making.

Parish and town councils are key stakeholders and consultees in the NSIP process. Suffolk has to deal with a very large number of NSIPs, particularly related to energy developments, so raising awareness of the current status of all of Suffolk's NSIPs with parish and town councils is important to allow for their fullest engagement in the process of NSIPs affecting their area.

Suffolk County Council's (SCC) Scrutiny Committee discussed on 30 June 2023, the impact of NSIPs on Suffolk's communities and how the Council works with communities to encourage consultation responses that are reflective of the views of local people. The CEO of SALC, Sally Longmate, highlighted the pressures and issues parish councils face in relation to NSIP's. The documents related to that meeting are available on the SCC website, and a recording of the meeting is available on YouTube.



<https://youtu.be/kKMnDr3ilm0>

1 - Video of Scrutiny Committee 30th June 2023

SCC Scrutiny Committee documents:

[https://committeeminutes.suffolk.gov.uk/DocSetPage.aspx?MeetingTitle=\(30-06-2023\),%20Scrutiny%20Committee](https://committeeminutes.suffolk.gov.uk/DocSetPage.aspx?MeetingTitle=(30-06-2023),%20Scrutiny%20Committee)¹

Recommendation f) from the Scrutiny Committee states that parish councils should be updated about the status of Suffolk's current and potential NSIPs. This newsletter will be provided every couple of months, prepared by SCC officers, and circulated through SALC.

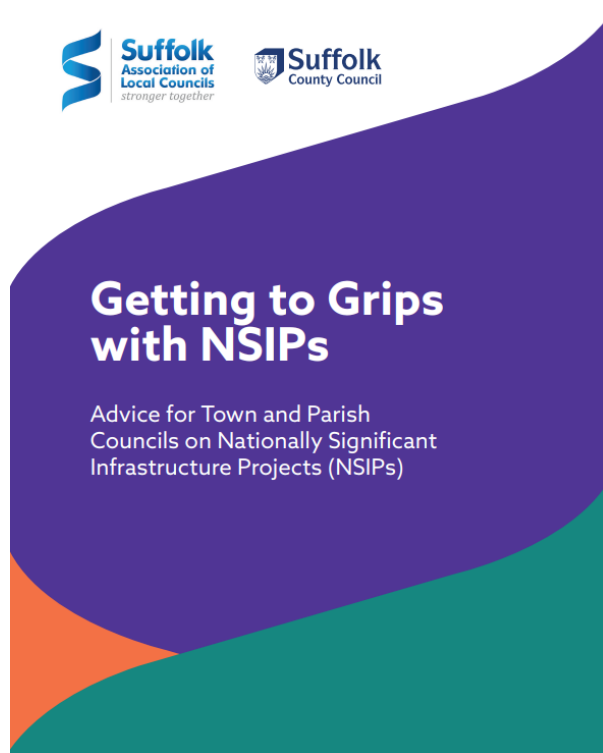
Local authority roles in the NSIP process

During the NSIP process, the role of the county and district council is that of a statutory consultee who can try to persuade/advise, but local authorities cannot force changes upon the developer, as they are not the decision-makers. Neither the county nor the district council are responsible for designing or delivering any scheme. However, they are important stakeholders who often can shape the design and mitigation of projects.

Parish and town councils hosting, or being adjacent to, proposed NSIPs are also statutory consultees. It is important for these councils to provide the local community perspective in the process, aiming to influence design, mitigation, and community benefit proposals.

¹[https://committeeminutes.suffolk.gov.uk/DocSetPage.aspx?MeetingTitle=\(30-06-2023\), Scrutiny Committee](https://committeeminutes.suffolk.gov.uk/DocSetPage.aspx?MeetingTitle=(30-06-2023),%20Scrutiny%20Committee)

Guidance for Town and Parish Councils



The Suffolk Association of Local Councils (SALC) and Suffolk County Council (SCC) have launched a guidance document on how town and parish councils can engage more effectively with the NSIP process. The guidance includes explanations of key documents, stages, and procedures within the NSIP process and was supported by a public launch that took place at the University of Suffolk on October 18. The guidance was also published on the SCC and SALC websites on this date. In drafting the guidance, SALC's experience in the governance and procedures of town and parish councils has been complimented by the SCC's significant knowledge and expertise in the NSIP process to inform potential roles that town and parish councils can play in NSIP projects.

More information : link to the guidance document Use this link to view the document²

Suffolk County Council NSIP Centre of Excellence

Suffolk County Council has received further Government funding to continue the work of its Centre of Excellence, which supports its own officers and other local authorities with Nationally Significant Infrastructure Projects (NSIPs). The council has successfully bid for £99,000 from the Government's Innovation and Capacity Fund, which will be spent on more events and materials to upskill and share good practice with county and district councils around England.

Suffolk's Centre of Excellence was established in August 2022. The council and its very experienced team were recognised by the Government last year for its knowledge and expertise when engaging with its large range of NSIPs.

The county council has long recognised that town and parish councils, who have limited resources, can easily be overwhelmed by the magnitude of NSIPs. The new funding has already enabled

²<http://www.suffolk.gov.uk/asset-library/getting-to-grips-with-nsips.pdf>

bespoke guidance published in partnership with the Suffolk Association of Local Councils (see item above).

The funding will also allow for updating and creating more accessible guides for local authorities and progress guidance materials for developers.

See press release: Use this link to visit the news article ³

Sealink

Location: East Suffolk

Sea Link is the proposal by the National Grid Electricity Submission for a subsea grid reinforcement link between Suffolk and Kent.

The Statutory Consultation for Sea Link has commenced and will conclude on 18 December 2023. A press release was issued by the SCC to coincide with the commencement of the Statutory Consultation, which encouraged local communities to respond to the proposals and set out SCC's stance, supporting the Government's drive for energy security but insisting that coordination on landing points, cable routes, and construction is essential. SCC officers are currently drafting a response to the Statutory Consultation, which will be discussed at Cabinet on 12th December.

Sea Link indicates that the submission of its DCO application will be in the second half of 2024.

More information

Link to Sea Link's National Grid website page: [Link to National Grid's website⁴](#)

Link to Sea Link Grid Reinforcement Statutory Consultation Suffolk County Council Response: [https://committeeminutes.suffolk.gov.uk/DocSetPage.aspx?MeetingTitle=\(12-12-2023\),%20The%20Cabinet⁵](https://committeeminutes.suffolk.gov.uk/DocSetPage.aspx?MeetingTitle=(12-12-2023),%20The%20Cabinet⁵)

Lionlink

Location: East Suffolk

LionLink is the proposal by National Grid Ventures Electricity Submission for a subsea electricity link between Suffolk and the Netherlands.

A supplementary non-statutory consultation for the LionLink proposals concluded on the 3rd of November. Suffolk County Council (SCC) has submitted a response that has made it clear that the two new landfall options put forward at Walberswick and Southwold/Reydon are considered unacceptable due to the lack of opportunity for coordination with other projects. Concerns have also been raised over the lack of information regarding why these options had been presented, and the

³<https://www.suffolk.gov.uk/council-and-democracy/council-news/councils-centre-of-excellence-to-go-nationwide>

⁴<https://www.nationalgrid.com/electricity-transmission/network-and-infrastructure/infrastructure-projects/sealink>

⁵[https://committeeminutes.suffolk.gov.uk/DocSetPage.aspx?MeetingTitle=\(12-12-2023\), The Cabinet](https://committeeminutes.suffolk.gov.uk/DocSetPage.aspx?MeetingTitle=(12-12-2023), The Cabinet)

response states that it is essential that the landfall at Aldeburgh, which is the option put forward in the Sea Link Statutory Consultation, should be retained for scoping and the Development Consent Order (DCO) examination. The response has been published on SCC's website.

A statutory consultation is expected in early 2024.

Link to Lionlink's National Grid website page: [Link to National Grid's website](#)⁶

Link to SCC's response to the non-statutory consultation: <https://www.suffolk.gov.uk/council-and-democracy/council-news/councils-concerns-for-lionlinks-impact-on-suffolk-coastline#:~:text=The%20impact%20of%20LionLink%20on,on%20the%20borders%20of%20Minsmere>⁷.

Sizewell C

Location: East Suffolk

Sizewell C continues its pre-commencement activities in relation to site preparation, ecological mitigation, and preparing for highway improvements. Sizewell C Co. has increased preparations for the formal commencement of the project. Suffolk County Council (SCC) officers are heavily involved in preparations, including governance and financial arrangements. SCC continues to handle applications for discharges of requirements and is working with East Suffolk Council on applications, which are their responsibility.

Commencement is anticipated in early 2024, with initial works focused on access arrangements.

More information

Link to the Sizewell C website: <https://www.sizewellc.com>⁸

Link to the Sizewell C PINS webpage where all public documents relating to Sizewell C can be found: [Link to Planning Inspectorate website](#)⁹

Bramford to Twinstead

Location: Babergh

This project proposal by National Grid Electricity Transmission (NGET) is to reinforce its 400 kV grid between Bramford and Twinstead.

The public examination of the proposals is ongoing and is due to close in February 2024. The Deputy Leader and Cabinet Member for Finance and Environment outlined Suffolk County Council's (SCC) concerns at an Open Floor Hearing, which included the impacts of the construction work on traffic and the visitor economy and the long-term impacts around Bramford substation on landscapes,

⁶<https://www.nationalgrid.com/national-grid-ventures/future-developments/lionlink>

⁷<https://www.suffolk.gov.uk/council-and-democracy/council-news/councils-concerns-for-lionlinks-impact-on-suffolk-coastline#:~:text=>

⁸<https://www.sizewellc.com/>

⁹<https://infrastructure.planninginspectorate.gov.uk/projects/eastern/the-sizewell-c-project/>

wildlife, and heritage along the route. Other Issue Specific Hearings involving technical matters are being attended by officers and their advisors.

More information

Link to Bramford to Twinstead's National Grid webpage: [Link to National Grid's website](#)¹⁰

All papers submitted to the examination can be found on the PINS website: [Link to Planning Inspectorate website](#)¹¹

Norwich to Tilbury

Location: Babergh and Mid Suffolk

This project proposal by National Grid Electricity Transmission (NGET) is to construct a new 400 kV electricity transmission line between Norwich and Tilbury.

Suffolk County Council (SCC) officers are attending an Expert Topic Group meeting with National Grid with regards to their proposals so that their views are made known before the Statutory Consultation stage is reached in 2024. Submission of the DCO application is expected in 2025.

More information

Link to Norwich to Tilbury's National Grid webpage: [Link to National Grid's website](#)¹²

Sunnica

Location: West Suffolk

The Secretary of State has announced a further delay to the decision on Sunnica, with a new decision date being set for the 7th of March 2024. This is the second official extension to the Secretary of State's decision for development consent, with the original decision date being the 7th of September 2023.

More information

Link to Sunnica's website: <https://sunnica.co.uk>¹³

Link to the Sunnica PINS webpage where all public documents relating to Sunnica can be found: [Link to Planning Inspectorate website](#)¹⁴

North Falls Offshore Windfarm & Five Estuaries Offshore Wind Farm

Location: Off East Suffolk coast / Essex

¹⁰<https://www.nationalgrid.com/electricity-transmission/network-and-infrastructure/bramford-twinstead>

¹¹<https://infrastructure.planninginspectorate.gov.uk/projects/eastern/bramford-to-twinstead/>

¹²<https://www.nationalgrid.com/electricity-transmission/network-and-infrastructure/infrastructure-projects/norwich-to-tilbury>

¹³<https://sunnica.co.uk/>

¹⁴<https://infrastructure.planninginspectorate.gov.uk/projects/eastern/sunnica-energy-farm/>

Both of these windfarms, proposed by different consortia, are proposed off the East Suffolk coast, with the landing point and onshore infrastructure proposed to be in Essex.

North Falls Offshore Windfarm completed its Statutory Consultation in July, and as a result of the responses received, it has removed the northern section of the proposals. This has moved the project further from the shore, from 22km to 42 km, and has also reduced in size from 150 km³ to 95 km³. The developer states that the changes will make a considerable difference to what will be visible from the shore, particularly from the Suffolk Coast. The changes reflect Suffolk County Council's (SCC) response to the Statutory Consultation, which highlighted concerns that the north-east section of the proposals would cause significant impacts on the Suffolk Coast and Heaths AONB, which could be eliminated by the removal of this part of the project. The changes publicised by the developer in the Community Newsletter (link below) are currently being reviewed by relevant officers.

Both North Falls and Five Estuaries indicate submission of their DCO applications in early 2024.

More information

North Falls Website: <https://www.northfallsoffshore.com>¹⁵

Solar Farms

Location: Mid Suffolk Area

Large solar farms have been offered connections in Suffolk in the latest published Transmission Entry Register (TEC) by National Grid. The TEC is a list of projects that have secured the right to connect to National Grid's network if they are consented under the Planning Act 2008 by Government. These projects often result in large NSIPs. The current list of connection offers shows new projects have been offered connections at National Grid sites at Bramford near Ipswich and Yaxley near Eye. These new projects are large-scale solar panel and battery storage proposals, which echo the recently examined Sunnica proposals in West Suffolk.

More information

A press release by the Suffolk County Council in reaction to the latest publication of the TEC can be found here: [Link to Suffolk County Council website](#)¹⁶

Other NSIPs

The following NSIPs in Suffolk have currently no significant updates to report:

- SPR: East Anglia 1 North and 2: Has DCO consent. It is awaiting Government subsidy approval and the outcome of a legal challenge. It is expected to move towards construction soon.
- SPR: East Anglia 1 and 3: Both are consented. EA1 is complete; EA3 is under construction.

¹⁵<https://www.northfallsoffshore.com/>

¹⁶<https://www.suffolk.gov.uk/council-and-democracy/council-news/developers-risk-treating-suffolk-communities-with-contempt>

- Gull Wing Bridge: Under construction. This SCC promoted scheme for a new bridge in Lowestoft will be completed in 2024.
- Drax: (formerly Progress Power) at Eye Airfield: Consented. preliminary construction works.

In addition, there is the possibility in the medium term of additional NSIPs, in relation to hydrogen infrastructure, water reservoirs, energy generation and potentially, in the longer term, further National Grid infrastructure. Future newsletters will update on further developments.

Suffolk County Council and the Suffolk Association of Local Councils

**December 2023 Parish Report
East Suffolk Council GLI Group – Councillor Update**

- **Ease the Squeeze on cost of living Including:**
- **Helping families access affordable school uniform**
- **A Warm Welcome for everyone**
- **East Suffolk Through the Lens photo competition launch**
- **Ease the Squeeze on cost of living**

Helping families access affordable school uniform

Community groups, organisations and town and parish councils are invited to apply for funding to help provide school uniform to East Suffolk families in need.

Following a successful round of funding earlier this year, the East Suffolk Uniform Bank grant scheme is now open for a second round of applications. The scheme provides funding for community groups to open a new uniform bank or expand an existing uniform bank.

Once operational, donations of new or pre-loved good-quality uniform, sportswear and school equipment can be made to the banks, which will then be made available to families who may be struggling to afford uniform.

Uniform banks which have been funded through the previous round of this grant scheme are now operational at Bloodmoor Community Centre in Carlton Colville, Project40Seven at Creative Leiston and St Luke's Church in Beccles.

GLI Cllr Sarah Whitelock, East Suffolk's cabinet member for Communities, Leisure and Tourism said: "On average, school uniform costs families over £300 per year, and this can be higher if a school requires the use of a particular supplier, or the uniform contains branded items. Providing uniform, sports kit and other school equipment can be a struggle for many families, particularly those in rural areas. Uniform banks can help ease this pressure by providing good quality uniform to those in need and also helps to reduce clothing waste."

Grants are available for up to £3,000 and applications are welcome from community and voluntary groups, organisations and town and parish councils.

Applications close on 28 January 2024.

Full details about how to apply: www.eastsuffolk.gov.uk/uniform-bank-grant-scheme

For further details, please contact: gemma.fraser@eastsuffolk.gov.uk

A Warm Welcome for everyone

A network of venues offering residents a warm, safe space to socialise over the winter has reopened for the second year.

East Suffolk Council's Warm Welcomes (formerly Warm Rooms) scheme has now relaunched, with more than 20 village halls, churches and community hubs providing a warm space and an opportunity to connect with other members of the local community.

Last year, Warm Rooms operated over the winter months to provide warm, friendly spaces across East Suffolk. This winter, the rooms have been rebranded as Warm Welcomes following feedback received by those using the service, and the host venues.

Part-funded by the UK Government's UK Shared Prosperity Fund, Warm Welcomes provide a safe and welcoming space where members of the community, including people who may be struggling with the cost of heating their homes, can come to meet with others and access information about additional support available in the community.

GLI Cllr Sarah Whitelock, East Suffolk's cabinet member for Communities, Leisure and Tourism said: "Warm Welcomes provide people of all ages with a safe space to visit to meet others from their community, take part in activities and find out more about other types of support available in their local area."

Earlier this year, community groups interested in joining the Warm Welcomes programme were encouraged to apply for grant funding. Venues must be open for at least 8 hours per week and the funding can be used as a contribution towards energy costs, refreshments, food, activities and the purchase or hire of resources such as craft materials.

Find your nearest 'Warm Welcome' here: www.eastsuffolk.gov.uk/warm-welcomes

East Suffolk Through the Lens photo competition launch

A search is underway for fabulous photos celebrating East Suffolk – 'Through the Lens'. East Suffolk Council is excited to announce the return of a competition giving photographers of all ages and experience the chance to showcase their favourite sights and scenes from across the district.

The competition, relaunched under the new name East Suffolk Through the Lens, will see one winning photo grace the cover of East Suffolk Magazine when delivered to every household in the district next spring. High street retail vouchers will also be up for grabs for the overall winner, under-16 winner and three runners-up.

Entrants are encouraged to submit photographs that capture the essence of East Suffolk – from its people and wildlife to its historic buildings and beautiful landscapes.

GLI Cllr Caroline Topping, Leader of East Suffolk Council, said:

"The district is full of inspiration for photographers; the people and places, natural beauty and stunning views. I'm looking forward to seeing how people capture it through the lens. It could be a moment that perfectly represents daily life, or an enduring image that encapsulates what we love about where we live."

More information about the competition can be found at the East Suffolk Through the Lens webpage. Entries should be submitted via an East Suffolk Through the Lens online entry form before midnight on Sunday 28 January.

Winners will be announced during the week commencing 26 February, with the overall winner receiving a £100 high street voucher and seeing their photo printed on the front cover of the spring edition of East Suffolk Magazine.

One under-16 winning entrant will also be chosen to receive a high street voucher worth £75, while three runners-up will each get a high street voucher worth £25.

www.eastsuffolk.gov.uk/features/photo-comp/

[Ease the Squeeze on cost of living](#)

Are you, or someone you know, worried about the increasing cost of living?

We understand the pressures faced by many people today and we are working closely with key partners to ensure support is available to help ease the squeeze for households in East Suffolk.

To make it as easy as possible for you to access the services and support available, locally and nationally, we have gathered information about them in one place:

www.eastsuffolk.gov.uk/community/squeeze/

For the most up to date information regarding East Suffolk Council, please visit:

www.eastsuffolk.gov.uk